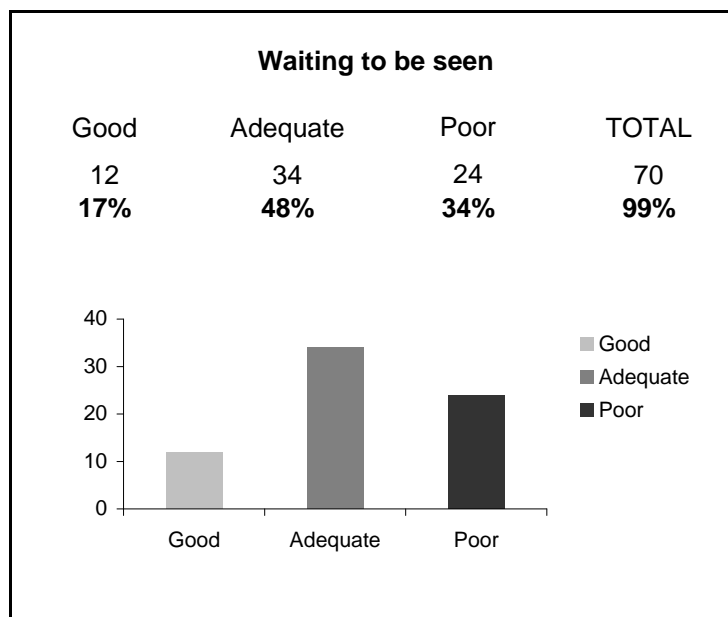
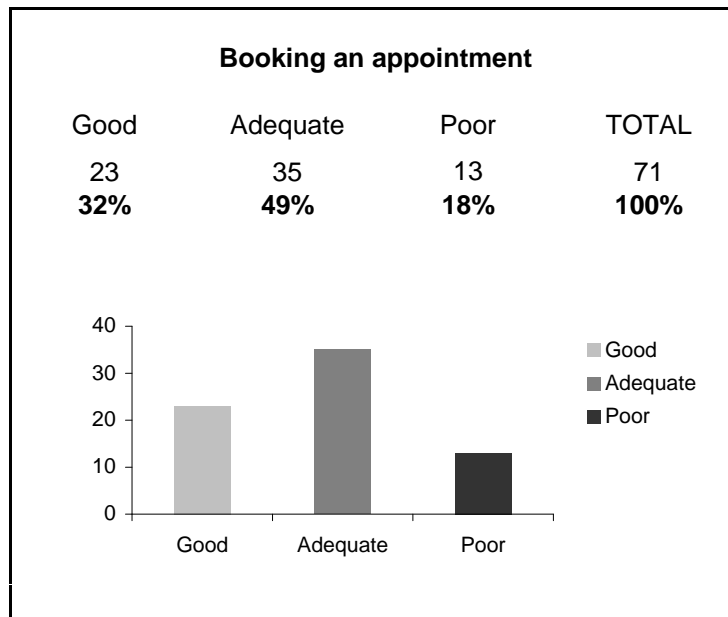
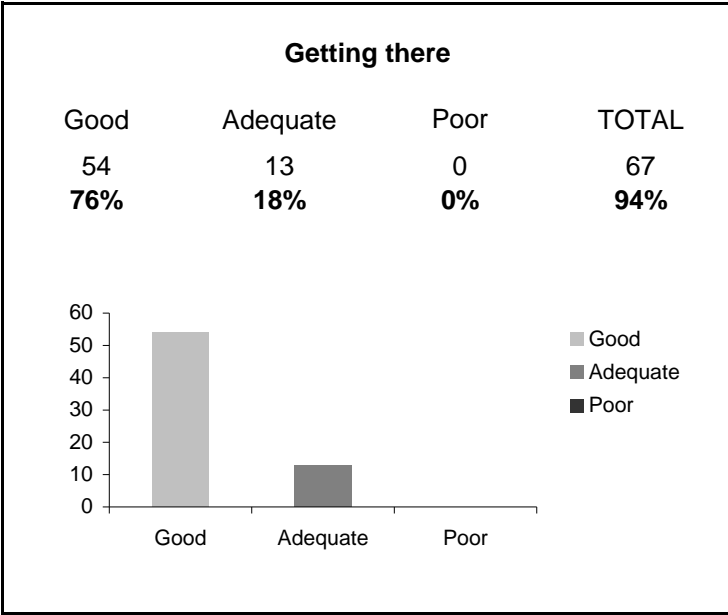
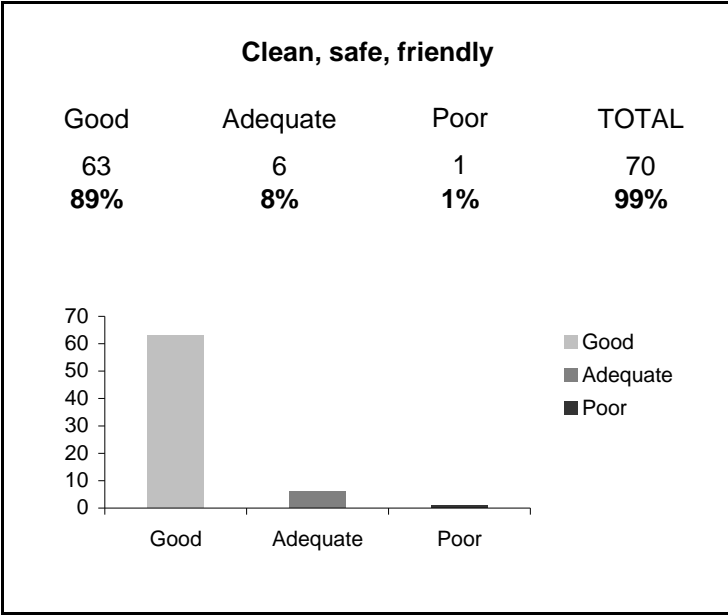


OUTREACH QUESTIONNAIRE SUMMARY

Woodlands Health Centre, 27 April 2011 - 18 May 2011

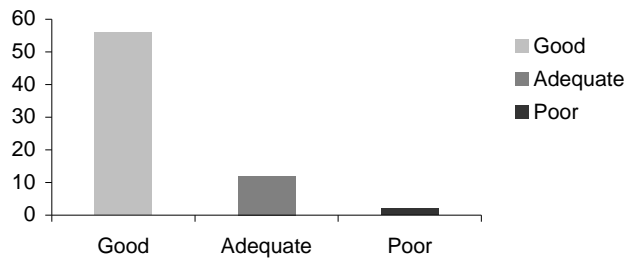
No of Completed Surveys: 71





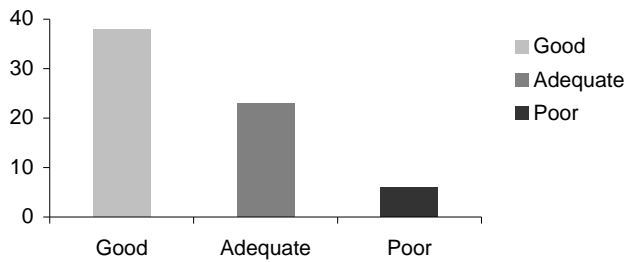
Treated with dignity and respect

Good	Adequate	Poor	TOTAL
56	12	2	70
79%	17%	3%	99%



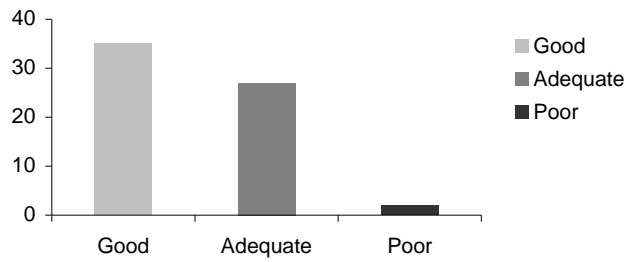
Getting information

Good	Adequate	Poor	TOTAL
38	23	6	67
54%	32%	8%	94%



Being involved in decisions

Good	Adequate	Poor	TOTAL
35	27	2	64
49%	38%	3%	90%



Family and friends can be involved

Good	Adequate	Poor	TOTAL
32	22	3	57
45%	31%	4%	80%

